

## CLEARING OF WORKING AREAS

### ROMAINE-4 COMPLEX

2016-2017

- Clearing of permanent work areas required for the construction of the last hydro-electrical complex on the Romaine River
- Cleared area of 393 ha on damaged field
- Construction of 7 km of forest roads

#### Client

Hydro-Québec

#### Partners

- Déboisement Raymond Ste-Marie
- Gestion DDG

#### Scale

\$ 10 000 000

#### Localization

Romaine River,  
north of Havre-Saint-Pierre,  
Côte-Nord area

#### Jobs

Total: 69 720 hours

Aboriginals: 21 780 hours  
(31 % of the total worked hours)

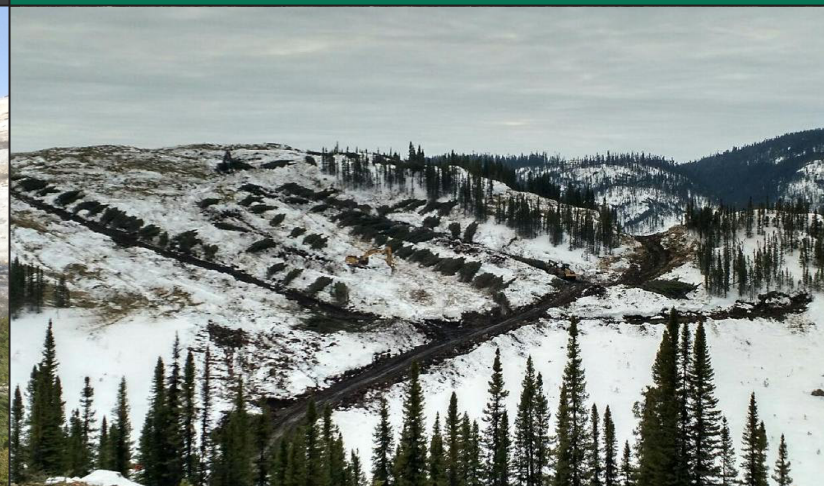


Overview of the works done

REALIZED BY NUTASHKUAN RESSOURCES



Manual clearing



Mechanized clearing